

VARIO™

Ceramic Burr Coffee Grinder

Operations Manual





VARIO™

Ceramic Burr Coffee Grinder

Operations manuals are available in
the following languages at
www.baratza.com

English.pdf

Spanish.pdf

French.pdf



VARIO™



Thank you for purchasing the VARIO™ Coffee Grinder. With the VARIO™, it's now easier than ever to make professional quality coffee, whether at home, the office, or your café. Below are detailed descriptions of the features that put the VARIO™ in a class of it's own.

Precision, commercial-quality ceramic burrs

Manufactured in Germany by MAHLKÖNIG, the VARIO's™ ceramic burrs are of the same material and durability as the industry's highest-quality line of commercial coffee grinders. Ceramic burrs remain sharp for up to twice the lifetime of the highest quality steel burrs.

Grind on Demand with electronic dosing

Grind on Demand operation with electronically controlled dosing grinds only the coffee you require for each shot directly into your espresso porta

filter or ground coffee bin for Filter and French Press.

Innovative grind adjustment system

Macro and Micro adjustments are quickly and repeatedly achievable with the intuitive VARIO™ adjustment system. The range of grind and the accuracy of the settings are truly impressive. The VARIO™ has 230 distinct settings of grind from Espresso to French Press.

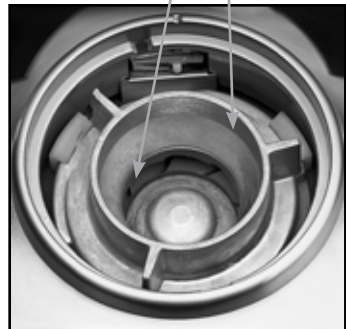
Quiet drive system

The VARIO™ houses a high torque DC motor with a belt drive transmission. The precise timing belt drive provides for smooth, quiet operation and thermal disconnection of motor and burr casing. Additionally, the VARIO™ possesses an auto-reset thermal safety circuit that protects the motor from overheating.

Table of Contents

Introduction	1
Table of Contents	2
Parts Identification	3
Safety Information	4
Initial setup and operation	5
Setting the Macro and Micro Grind Adjustment	5
Normal Grinding Operation	6
Programming Grind Dosing Times	6
Sleep Mode	7
PortaHolder™ Installation	7
Burr Calibration	8
Cleaning the Housing and Hopper	9
Cleaning the Burrs	9
Automatic Cleaning	9
Removing the Upper Burr	10
Replacing the Upper Burr	10
Replacing the Bean Hopper	10
Help and Troubleshooting	10
Warranty	11
Grinding Notes	12
Baratza Contact Information	13

VARIO™ *Parts Identification*



Important Information

Please read the information below very carefully. It contains important tips for the use, the safety and the maintenance and care of this appliance. Please keep these operating instructions for future reference.

Your new VARIO™ is rated for either 120 VAC or 230 VAC. Please confirm the voltage of your VARIO™ on the nameplate attached to the bottom of the grinder. The 120 VAC Vario can be used from 100 to 130 VAC and the 230 VAC VARIO™ can be used from 200 to 240 VAC. Please insure your supply voltage range matches the nameplate voltage on you VARIO™.

Only clean the grinder housing with a dry or slightly damp cloth.

Do not use this grinder for anything other than its intended use (i.e. grinding whole roasted coffee beans). Maximum continuous duty cycle is 25%. Longest continuous grind time is 90 seconds.

Disassemble your grinder only as directed in the care and cleaning section of this manual. If you cannot remedy a malfunction, please

visit the web at www.baratza.com for assistance.

Repairs are to be performed only by authorized service centers. An improperly repaired grinder is a source of risk to the user and voids the warranty.

Baratza will not accept any liability for damage or injury if the grinder is used other than for its intended purpose or is improperly operated or repaired. All warranty claims will be void.

For Your Safety

Do not operate the grinder with a damaged cord or plug, or if the grinder malfunctions.

Do not leave your grinder unattended while turned ON.

Shut off and unplug the grinder from the electrical outlet before cleaning. To unplug, grasp plug and removed from the outlet-never pull on the cord.

Do not immerse the grinder, plug or cord in water or any other liquid.

Initial Set Up

Place the Vario Grinder on a level surface. Insert the hopper by lining up the two small tabs on the base of the hopper with their respective slots, turn clockwise until the back tab lines up with the mark on the back of the grinder. Insert the plug into an AC outlet. Pour the desired quantity of roasted whole coffee beans into the hopper up to a maximum of 250 Grams. Replace the lid. Ensure the ground coffee bin or PortaHolder™ is fully inserted.

Setting the Macro and Micro Grind Adjustment

Move the Macro lever up or down to the desired range of grind size (Note: whenever moving the Macro lever up the grinder should be running). Set the Micro adjustment lever to the middle of the scale. Grind a small amount of coffee by pressing the START button, then pressing it again to stop. Check the particle size. If the particle size is close to what you desire, now use the Micro lever to “fine tune” your grind size. If the particle size needs a big change, then adjust the Macro lever to a new position, then fine tune with the Micro lever. The full range on the Micro scale is

equal to one “click” or position on the Macro scale. With both levers, moving UP produces a smaller particle size and DOWN produces a larger particle size. The actual grind size for a particular setting will vary depending on many factors, including: degree of roast (light vs. dark), freshness, humidity, type of bean, oil content, etc. With use, you will determine the setting that is right for your taste, brewing style and your favorite beans.



Normal Grinding Operation

Press the desired button (Espresso, Filter or Press). The blue LED next to the button will light and the display LCD will show the corresponding programmed grind time in seconds. Press START button to begin grinding. While grinding, the LCD will count down the seconds to 0. When the LCD reaches 0 seconds, the motor will stop and the display will reset again to the programmed time. For greater quantities of ground coffee, press the MANUAL button then START. The grinder will count up to a limit of 90 seconds then shut off automatically. At any time during MANUAL, you can stop the grinding by pressing the START button. The motor will stop and the LCD will reset to 000. The limit of 90 seconds is not user adjustable.

Programming Grind Dosing Times

The VARIO™ is equipped with three programmable dosing grind times. The buttons are conveniently labeled for Espresso, Filter and Press. These programmable buttons only adjust the grinding TIME, they do not adjust the coarseness of the grind. Each button comes from the factory with a preset time: Espresso: 10 seconds, Filter: 20

seconds and Press: 30 seconds. After adjusting the grind (particle size) to your desired setting, press the desired button, and then press START. The grinder will run and the display will count down from the preset time.

The grinder will stop automatically when time reaches 0. To stop at any time during grinding, just press the START button again. Depending on the amount of coffee ground, you can easily program more or less grinding time as follows:



1. Press the up or down arrow just below the LCD display to adjust the time. Press and hold the arrow for 3 second to advance the time more quickly.
2. Once you have reached the desired time setting, press the corre-

sponding button (Espresso, Filter, or Press) and hold for 3 seconds. The time shown in the LCD display will blink to confirm the setting is stored.

3. Repeat steps 1 and 2 above for each of the other two buttons.

The quantity of ground coffee you need depends on the type of bean, coarseness of the grind, brewing method and personal taste. With use, you will find the most suitable settings for your personal taste.

Sleep Mode

This is a programmable feature to allow the lights and display to turn off after a pre selected amount of time elapses since last grinding. Also there is the ability to “force” it to sleep mode by pressing and holding the START button for 3 seconds. As soon as the lights turn off you can release the button. Touching any button will “wake it up” (but will not perform the function of the button pressed). To select sleep mode delay, press and hold the MANUAL button for 3 seconds until the display shows “S00”. “S 00” means Sleep mode never happens. The up or down arrow allows selection for 3 minute delay (S03), 5 minute (S05), 10 minutes (S10), 20 minutes (S20), 30 minutes (S30) or infinity (S00) . Press the MANUAL button to store the value you desire.

PortaHolder™ Installation

Insert the PortaHolder™ into the grinder until it clicks. Then insert your porta filter into the PortaHolder™ by tipping the basket down so the lip of the porta filter slides under and gets hooked by the hook bracket at the top rear of the PortaHolder™ while the base of the basket is supported by the two metal fingers that extend from the PortaHolder™. If the porta filter basket is not horizontal in the holder, remove the screw and move the bracket higher or lower in order to level the portafilter basket.

To use, insert your porta filter into the PortaHolder™. Press the desired dose button, then press START. The grinder will run for the preset dose time and stop automatically.



Burr Calibration of the VARIO™

A secondary 2mm allen head calibration screw has been added. It is located in the round hole between the discharge chute and the calibration grommet (see photo). This calibration screw allows the user to easily adjust the calibration in the finer direction while the grinder running.

To make the adjustment, empty all beans from the grinder, lower the Macro and Micro levers all the way to the bottom and run it briefly to expel any partially ground coffee. Press the Manual button and then the Start button. While the grinder is running, raise the Macro arm all the way to the top (Espresso). You should not hear any change in motor speed. Now raise the Micro arm up the midpoint. You should begin to hear the motor slow (or labor a little). If not, use the special Vario tool (see photo) provided with your grinder. Insert the tool and turn in the finer direction until you begin to hear the motor slow or labor. You are done! If you do not have a tool you can substitute a 2mm Allen wrench and turn clock wise while looking up at it.



Cleaning the Housing and Hoppers

Remove the plug from the AC power outlet. Remove the hopper by twisting it in a counterclockwise direction until it stops and then lift the bean hopper from the housing. Wash the hopper, hopper lid, and ground coffee bin in warm soapy water, rinse and dry.

Caution: Do not put the bean hopper, hopper lid, or ground coffee bin in the dishwasher. Hand wash only. Do not immerse the grinder housing in water.

Cleaning the Burrs

If the grinder is used daily, the burrs should be cleaned every few weeks. Cleaning enables the burrs to achieve the most consistent grind possible. Cleaning also removes coffee oils which will stale and degrade the flavor of the ground coffee. Do not wash the burrs.

Automatic Cleaning

A thorough fast, and easy cleaning can be accomplished using GRINDZ™ grinder cleaner. GRINDZ™ is a product designed to dislodge coffee particles and absorb and remove odors and coffee oil residue. Simply place the recommended amount of GRINDZ™ (35g) into the empty grinder hopper. Adjust the grind setting to Filter, press MANUAL, then START until all of the GRINDZ™ has been ground, and then press START again to stop the grinder. Once complete, we recommend passing through some coffee to remove any GRINDZ™ residue. Discard the ground coffee. For information on GRINDZ™ go to www.urnex.com.

To purchase GRINDZ™ go to www.baratza.com.



Removing the Upper Burrs

The upper burr can be removed in order to clean the burrs, however it is imperative that there are no coffee grounds on the mating surfaces when you replace the burr. Any coffee grounds left between the mating surface will affect the calibration and the grinder's ability to grind fine.

To remove the burr, rotate the metal burr carrier clockwise until it stops then lift straight up and out of the grinder housing. Clean the burr using a stiff brush. Remove any loose coffee grounds on both the fixed burr and the lower burr mounted within the motor housing.

Replacing the Upper Burr

While rocking the burr side to side, push down firmly on the burr carrier to ensure that it seats properly. Rotate the burr carrier counter-clockwise until it stops.

Replacing the Bean Hopper

To replace the bean hopper, line up the two small tabs on the base of the hopper with their respective slots.



Need Help?

For FAQ's or to troubleshoot a problem, please see the Troubleshooting section at www.baratza.com

Warranty and Service

Length of Warranty: One-year from date of purchase.

United States Warranty Information

If your grinder fails within one year: e-mail: support@baratza.com or call 877-701-2021. Baratza will deliver an identical or comparable replacement grinder to your door, free of charge, and arrange to have your “failed” grinder returned to us.

When you receive your replacement grinder, please use the carton and packing material and the return shipping label supplied to return the “failed” grinder to us. Also, please include your name, address and telephone number.

International Warranty Information

Go to: www.baratza.com or call 425-641-1245 for international warranty information.

Proof of Purchase and Product Registration

You can register your grinder at www.baratza.com. Registration will enable us to contact you in

the unlikely event of a product safety notification and assist us in complying with the provisions of the Consumer Product Safety Act. The serial number is located on the bottom of the grinder.

Please keep your sales receipt that shows the date of purchase and complete the following for your personal records:

Serial Number (located on bottom of grinder):

Date Purchased:

Store:

For repairs or parts contact

Baratza LLC
3923-120th Ave. S.E.
Bellevue, WA. 98006
877-701-2021

e-mail: support@baratza.com

Parts: www.baratza.com



Grinding Notes

© 2009
Baratza, LLC
3923-120th Ave. S.E.
Bellevue, WA. 98006
www.baratza.com



rev: 122109